





Matusadona, 1992

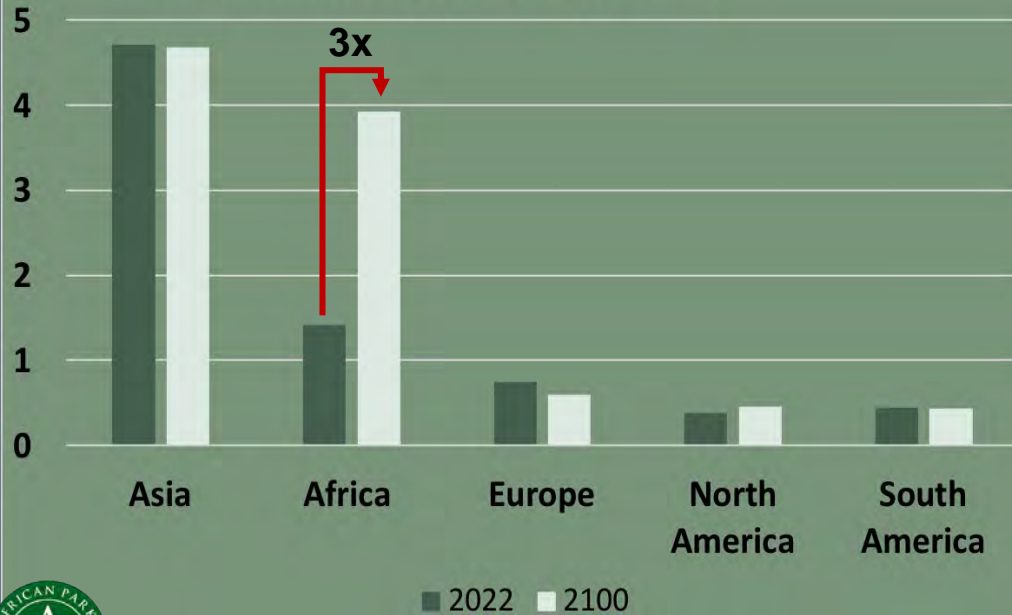
The
African context

Africa is home to the world's largest intact landscapes and hosts 25% of the planet's biodiversity

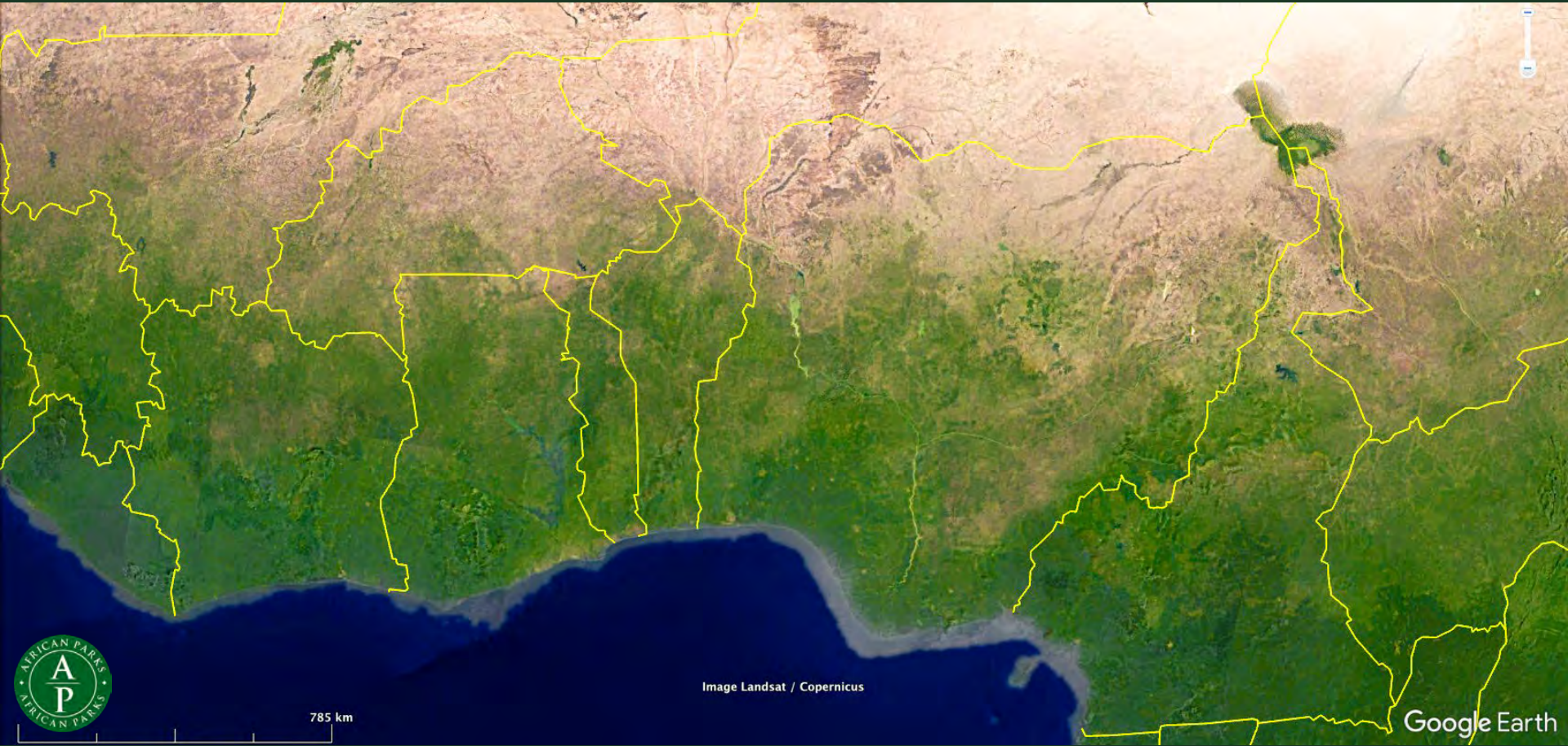


The African context

Estimated Human Population (billions)



The Sahel: 1990

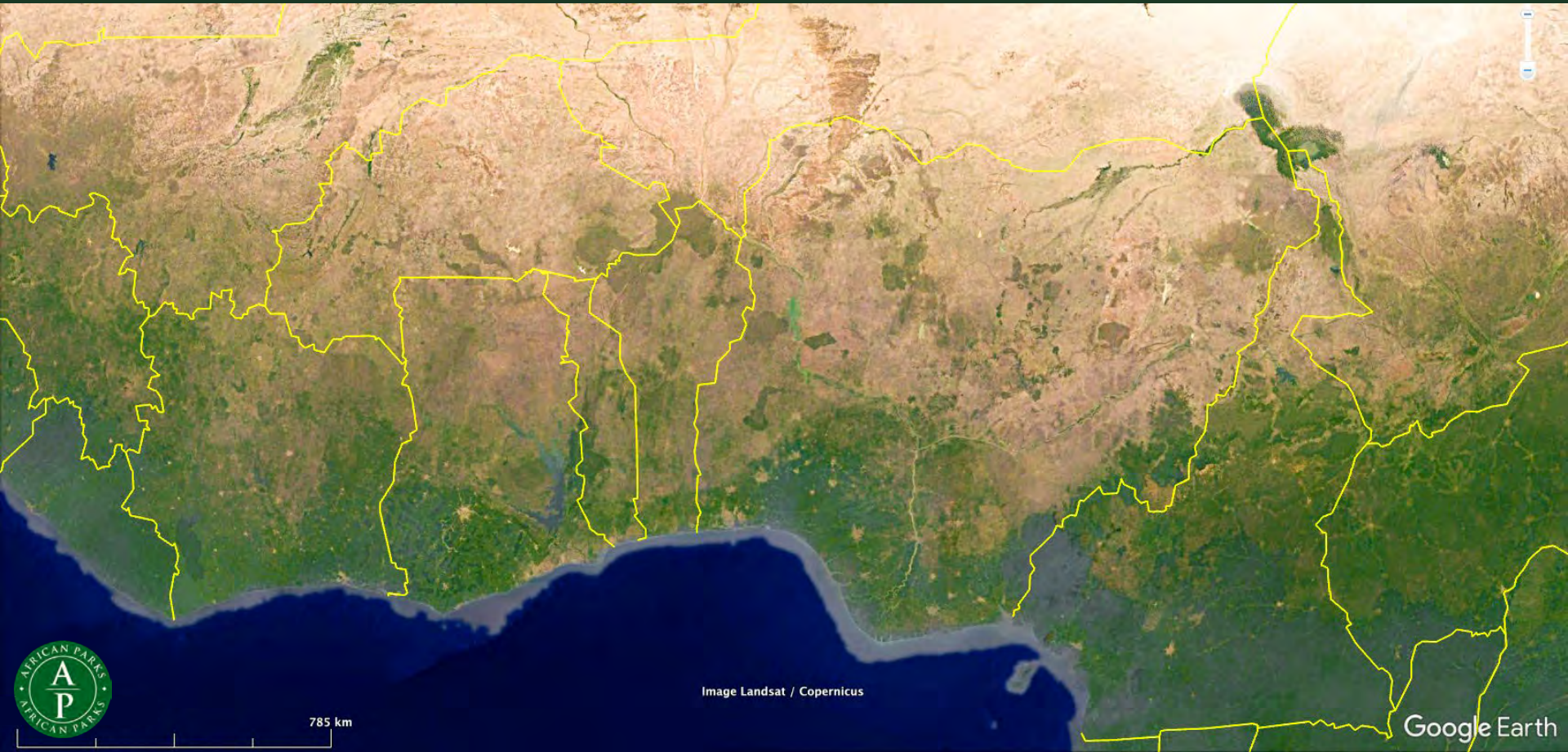


785 km

Image Landsat / Copernicus

Google Earth

The Sabel: 2020

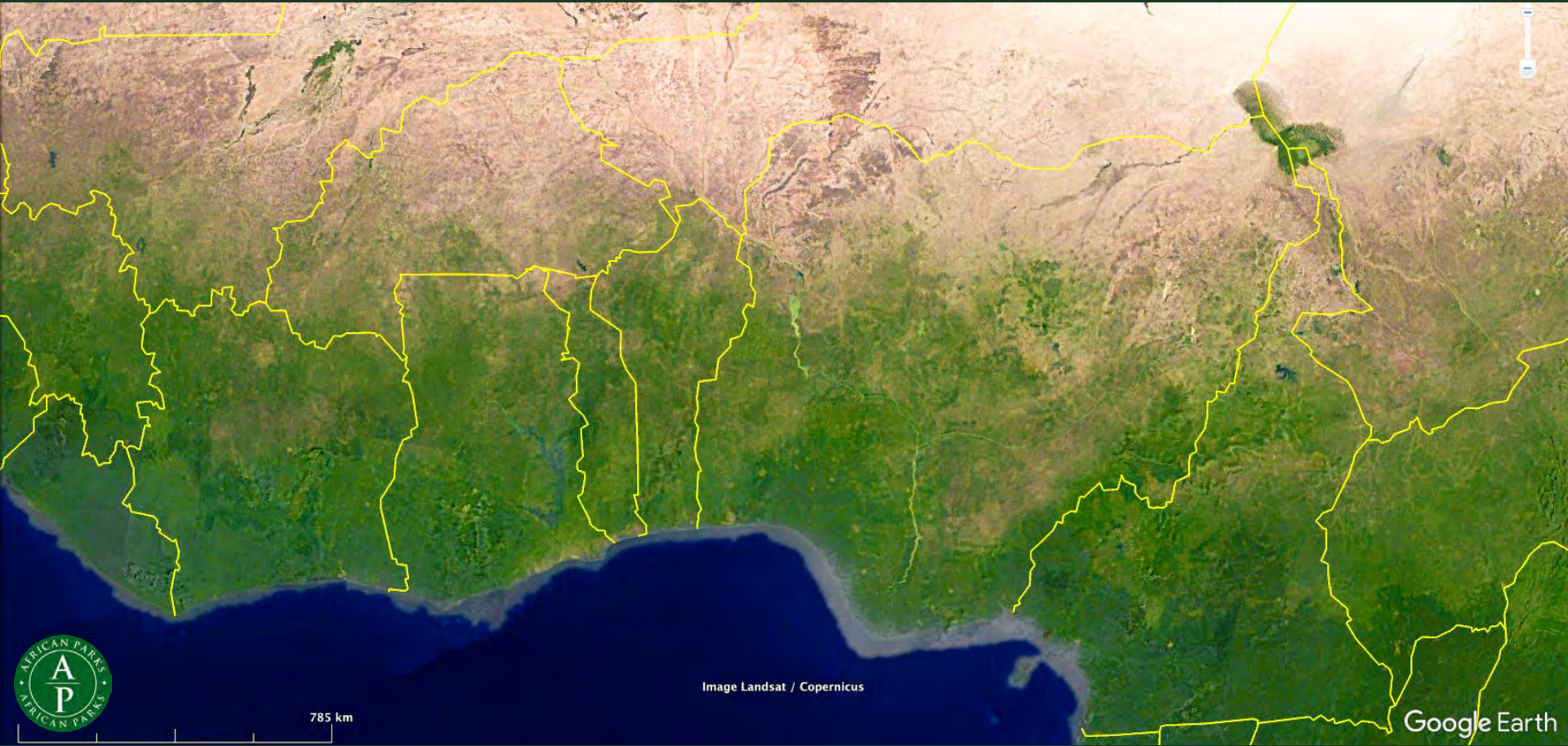


785 km

Image Landsat / Copernicus

Google Earth

The Sahel: 1990

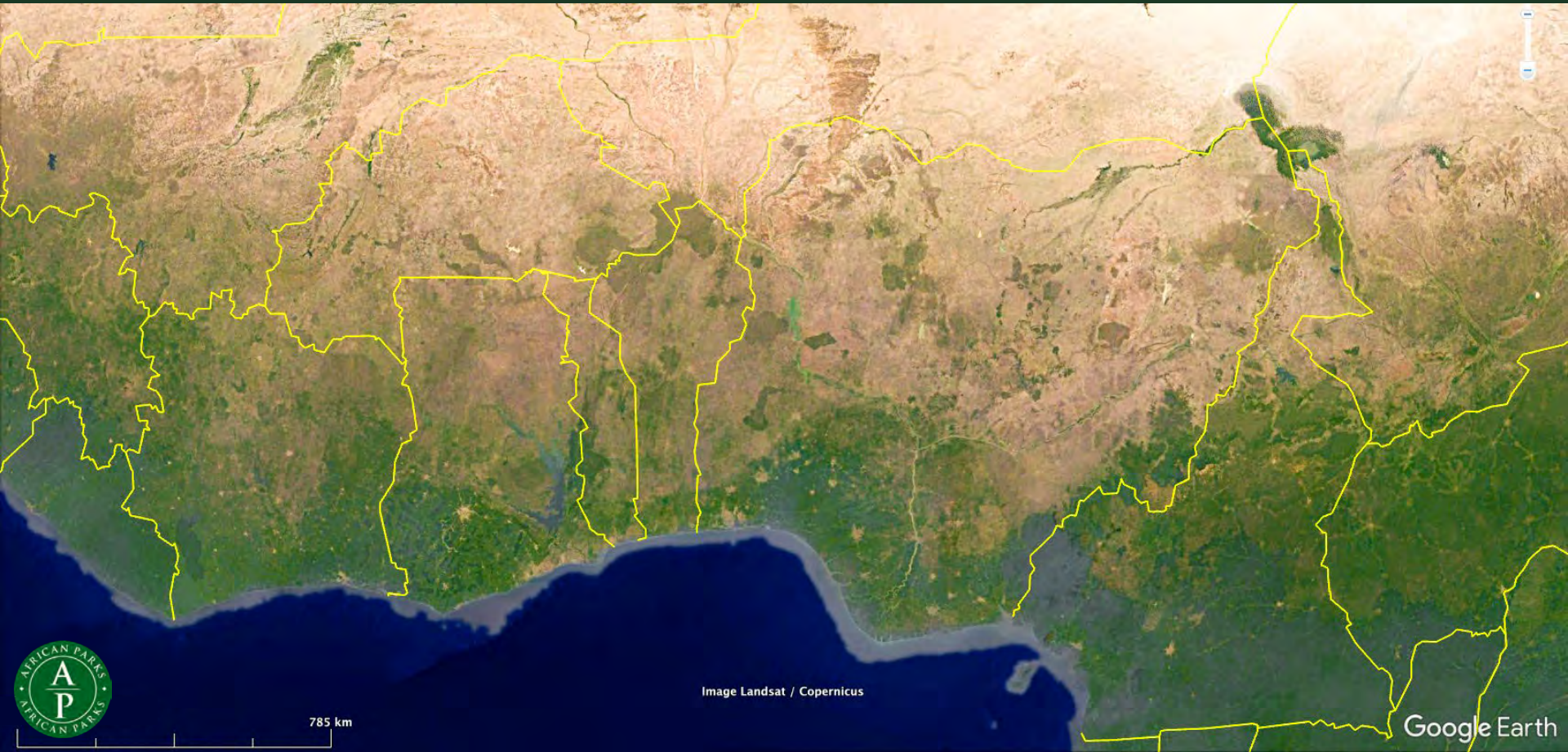


785 km

Image Landsat / Copernicus

Google Earth

The Sabel: 2020

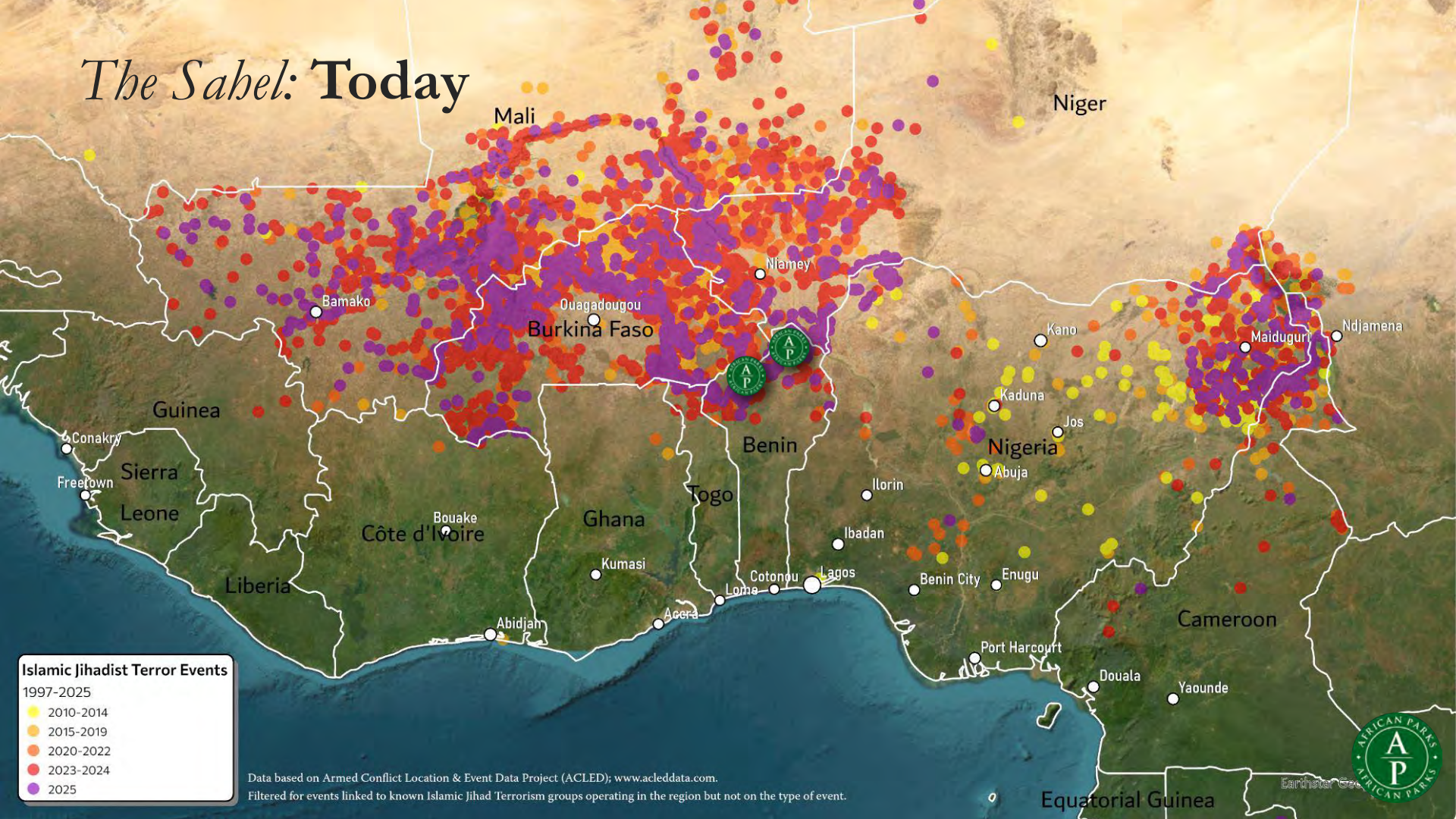


785 km

Image Landsat / Copernicus

Google Earth

The Sahel: Today



Islamic Jihadist Terror Events
1997-2025

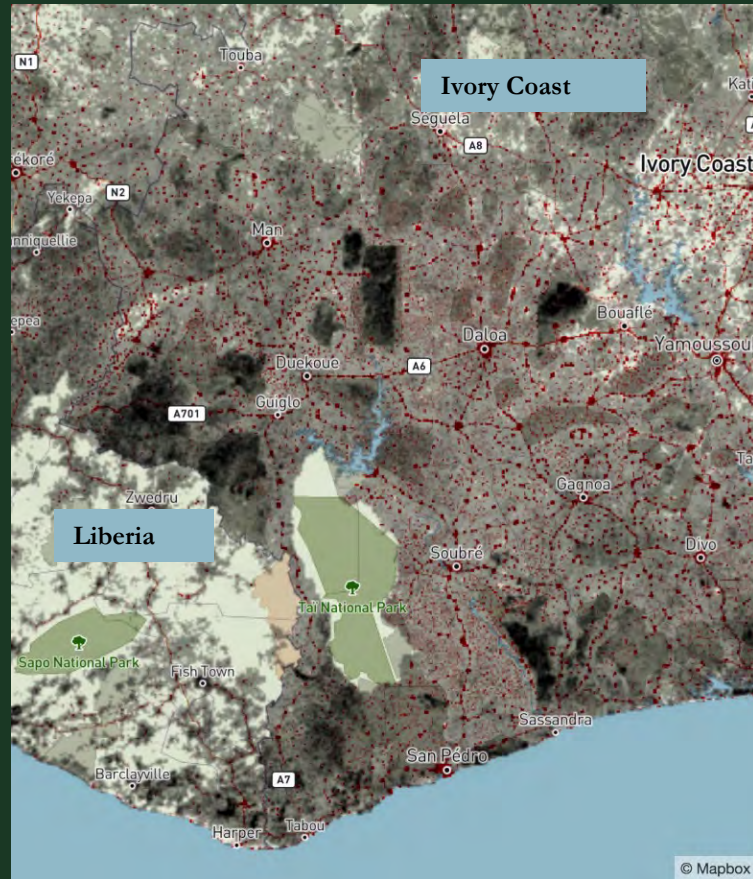
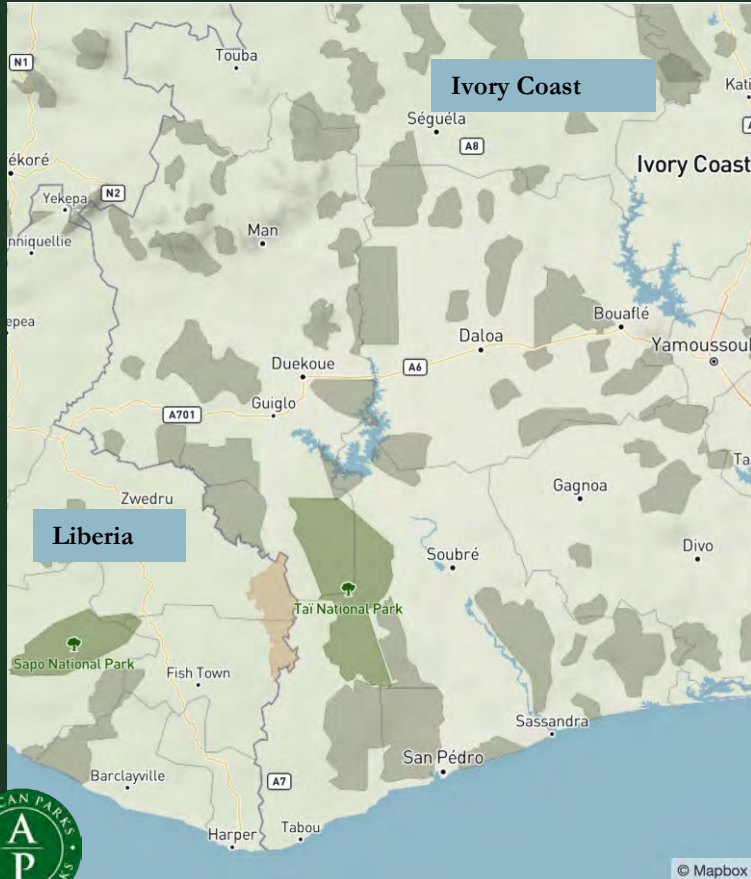
- 2010-2014
- 2015-2019
- 2020-2022
- 2023-2024
- 2025

Data based on Armed Conflict Location & Event Data Project (ACLED); www.acleddata.com.
Filtered for events linked to known Islamic Jihad Terrorism groups operating in the region but not on the type of event.



Earthstar Geo

“What is not being managed today, will be lost tomorrow”



- Deforestation
- Human footprint



Our Portfolio

- 24 parks
- 13 countries
- 20m ha
- \$200m budget (2026)
- 6,250 employees (97% local)
- 500k people inside areas we manage



The **Model**

1 Mandates

2 Management

3 Money



Biodiversity Conservation



Community Development



Revenue Generation



Infrastructure,
governance, safeguards

1 Mandates

Un partenariat
stratégique pour
la conservation et le
développement durable
du parc national
de Kundelunga



CEO-APN

DG-ICCN

ICCN
INSTITUT CONGOLAIS
POUR LA
CONSERVATION
DE LA NATURE



① Mandates: *Governance Structures*

Macro

Government (Sovereignty)

- Owner, legislation, statutory oversight

Meso

Park Board (Gov, AP, key stakeholders)

- Strategic oversight, approves plans & budgets

Micro

African Parks (Management)

- Management within defined framework



② Management: *Biodiversity Conservation*



>2,200 Rangers



37 Species | 11,610 Animals



40+ Research partnerships



② Management: *Community Development*



280,000

Communities
engaged



34,000

Environmental
Education visits



\$4.4m

Revenue shared
/made



② Management: *Revenue Generation*



188,000 Tourists

59% Local tourists



\$16m Revenue

111 Lodges

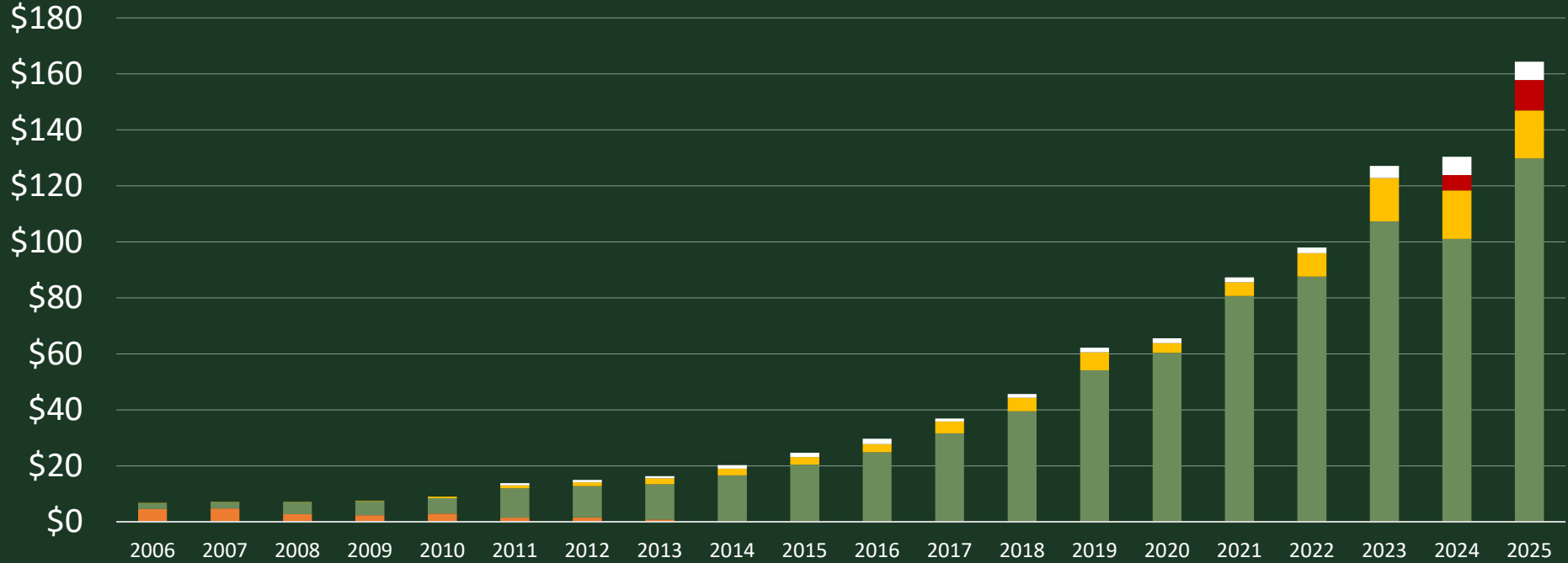


② Management: *Enabling functions*



3 Money

9% Overhead costs



Internal reserves

Donor contributions

Park revenue

Carbon & VNU

Endowment income



The Challenges



VISION

30%



MISSION

To have the greatest conservation impact in Africa

2030 OBJECTIVE

Mandates

30 Protected Areas
30 million hectares

Management

Park specific activities to ensure Ecological, Social, Financial sustainability

Money

Funding: \$200m
Endowment: \$1b
NBS: \$35m

Conservation Development

Human Resources

Operations

Marketing & Comms

Community & Safeguards

Finance

Funding

Technology, Systems & IT

IMPACT MULTIPLIERS

Sectoral Initiatives

Incubator, Rhino Rewild, Academy, Sector Engagement

Our Values

PASSION

A passion for Africa, its nature and its people.



RESILIENCE

We are patient & always polite, but perseverance is what gets us there in spite of the challenges.



TELL IT LIKE IT IS

Bad news is shared with the good news. Honest conversations.



LEARN FROM MISTAKES

Mistakes arise from 'doing': they must be learning experiences. If in doubt, consult.



TO ENFORCE THE LAW, WE MUST UPHOLD THE LAW

Apply the same standards to ourselves as to others.



PRAGMATIC & RESULTS ORIENTED

We keep sight of the main objective: effective & efficient management.



PARTNERS FIRST

We manage other peoples areas using other peoples money: Show respect & give credit.

ACCOUNTABILITY

We are accountable to the conservation cause. We own the problem, and are responsible for the solution.



'DARE TO' ATTITUDE

Our work is not easy: courage to overcome risk in pursuit of our purpose.



HAVE FUN

It is a privilege to work for AP, so connect with what we do & who we do it with.



The Lessons learned

- Clarity of purpose / focus – relentless on execution
- Build off success (e.g. Chinko)





1800 kms

Ruler

Line Path Polygon Circle 3D path 3D polygon

Measure the circumference or area of a circle on the ground

Radius: 1,805.06 Kilometers

Area: 10,133,103.00 Square Kilometers

Circumference: 11,152.34 Kilometers

Data SIO, NOAA, U.S. Navy, NGA, GEBCO
Image Landsat / Copernicus

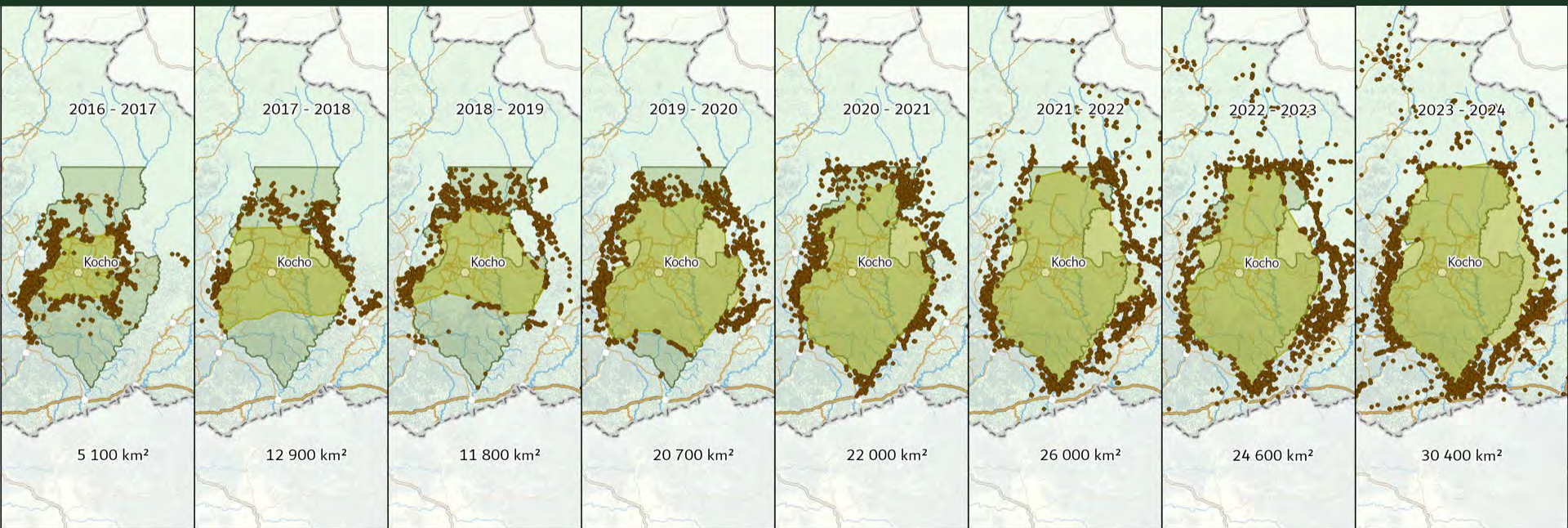


Google

Mouse Navigation

Save Clear

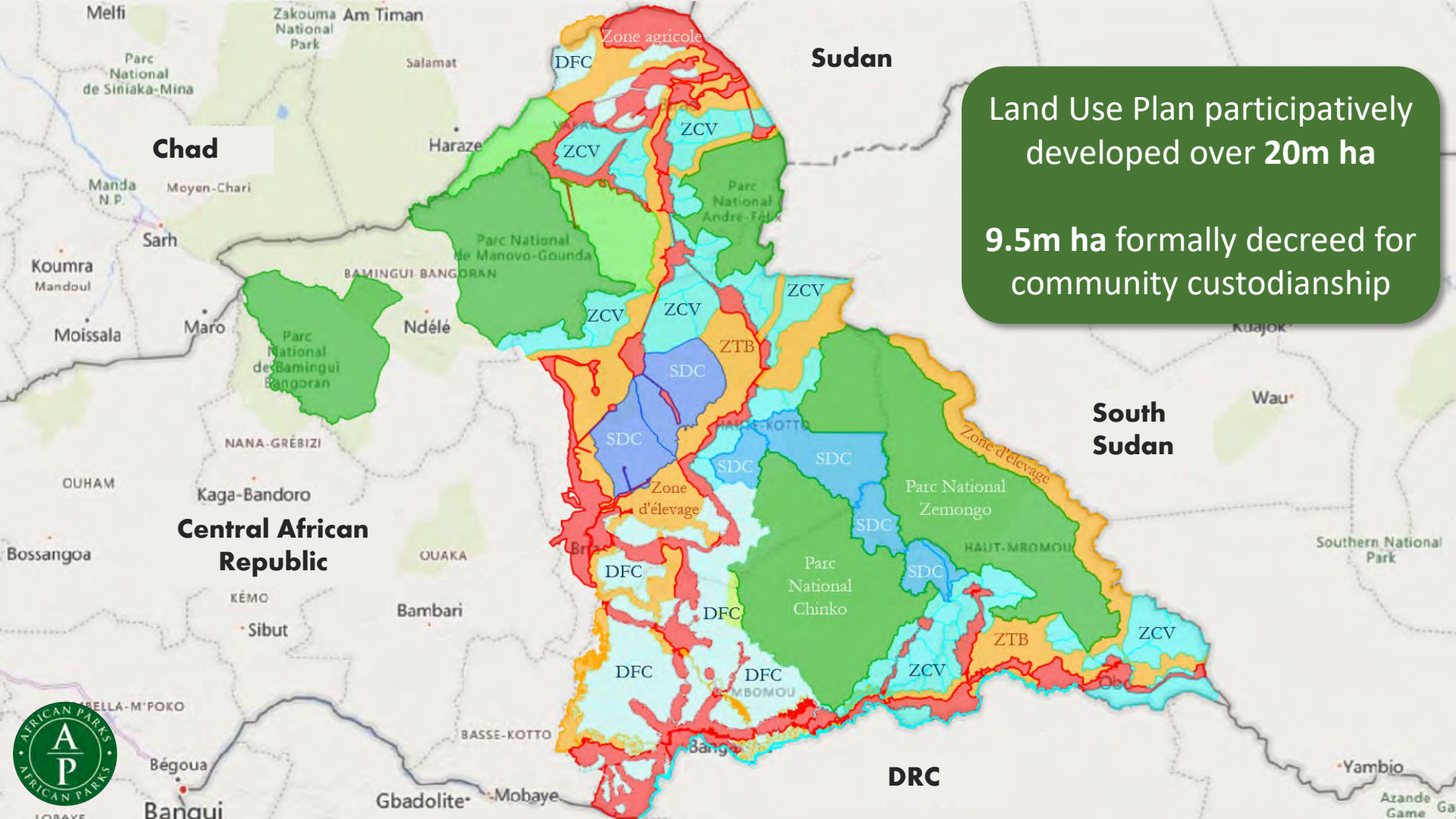
Development of the Chinko Core Zone



500k ha

3m ha





Land Use Plan participatively developed over 20m ha
9.5m ha formally decreed for community custodianship



The Lessons learned

- Clarity of purpose and remain focused
- Build off strength (e.g. Chinko)
- Results create the opportunity for funding
- Be careful of mediocrity (detail matters)
- Humility to listen to others, but be discerning in your response
- Set the plan locally – and fund it
- Recruit for values “keeping the soul”
- Scaling requires the institutional platform

