



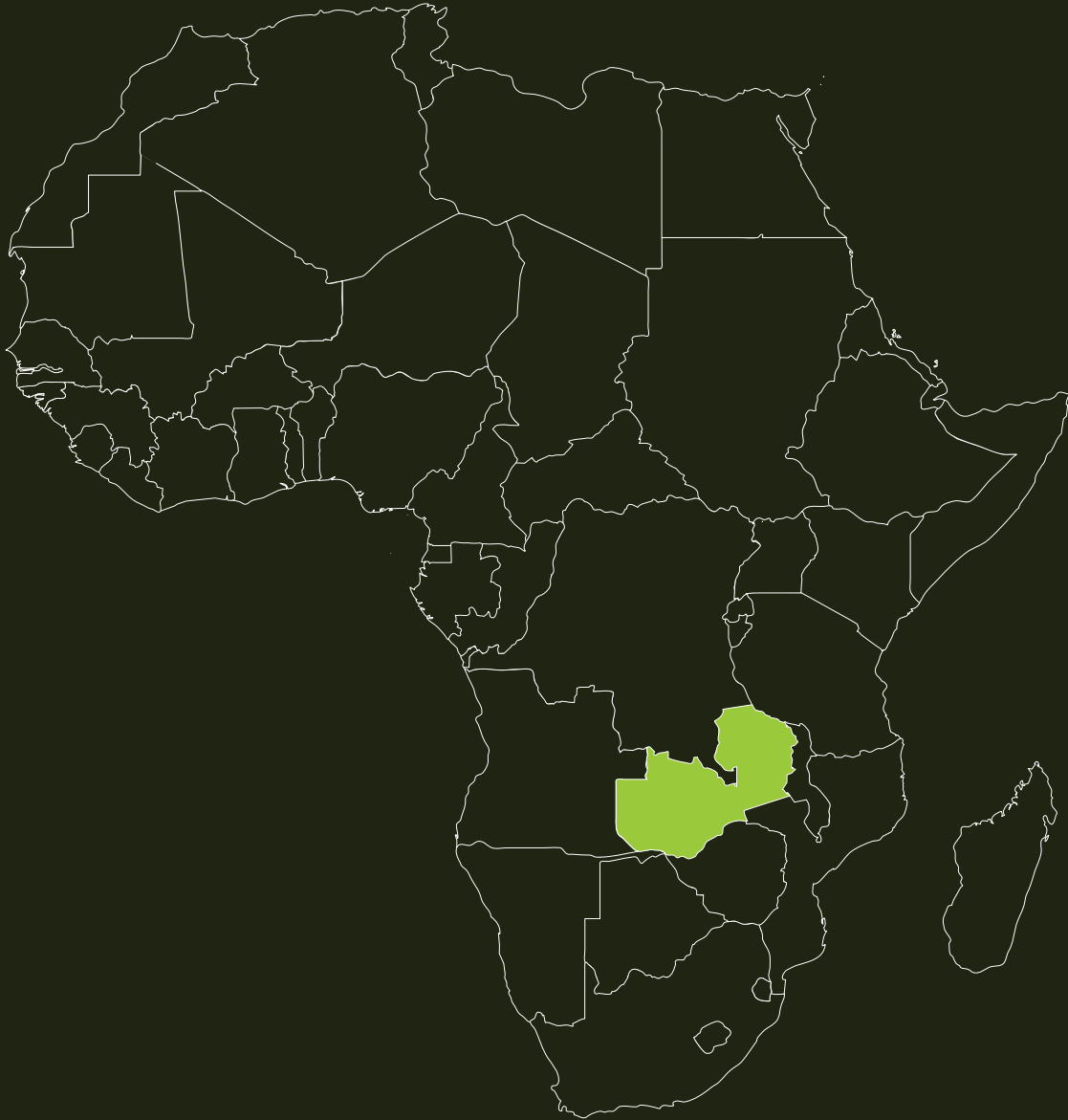
# NORTH LUANGWA CONSERVATION PROGRAMME

Gilbert Mwale – Landscape Integration  
Manager

May 2026



# Key Facts About Zambia



**Land size:** ~752,600 km<sup>2</sup>

**Climate:** Tropical-rainy season (Nov-Apr), Cool dry (May-Aug), Hot dry (Sep – Oct)

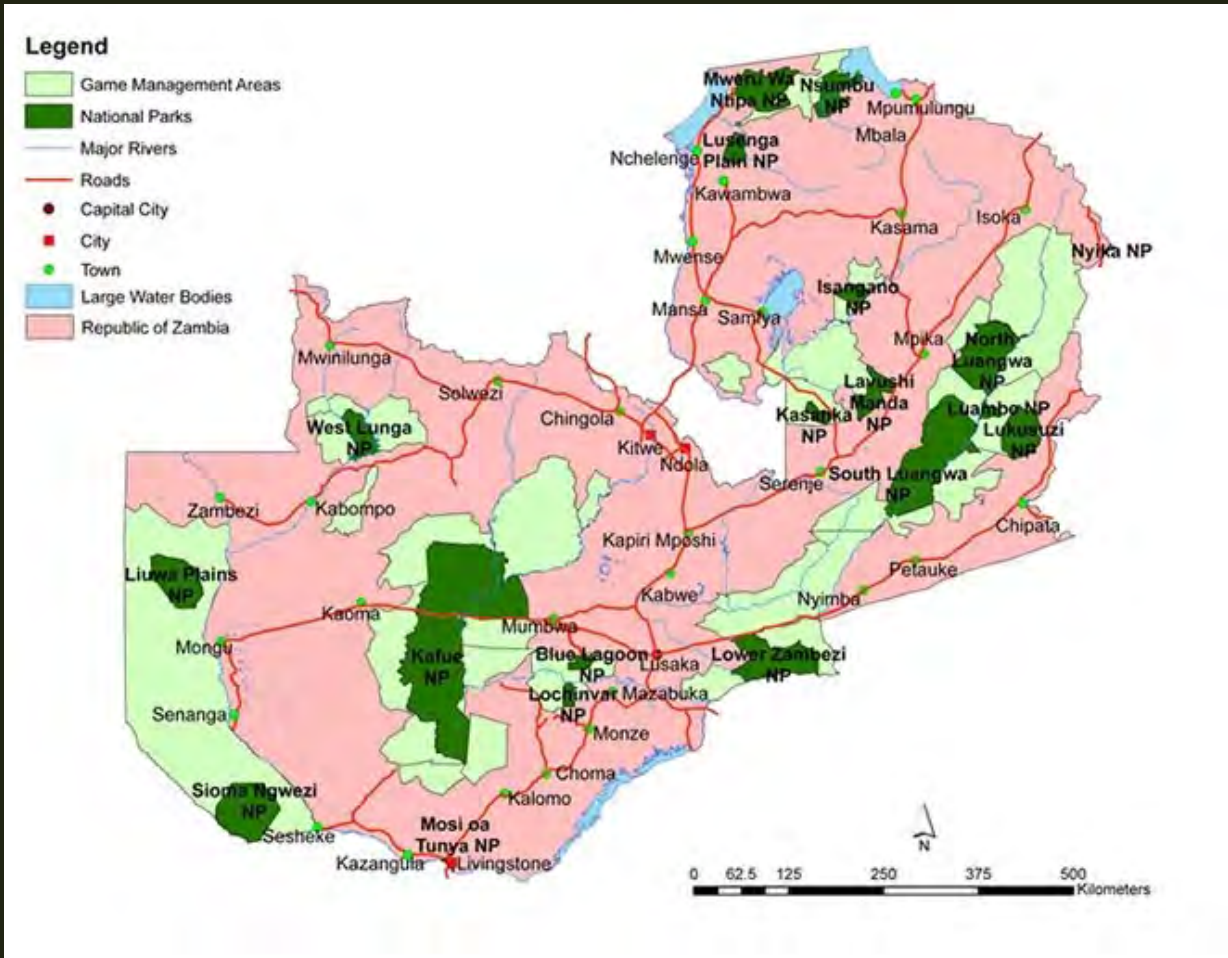
**Population:** ~20 million people

**Ethnic groups:** More than 70 ethnic groups

**Languages:** English (official language), 72 local languages

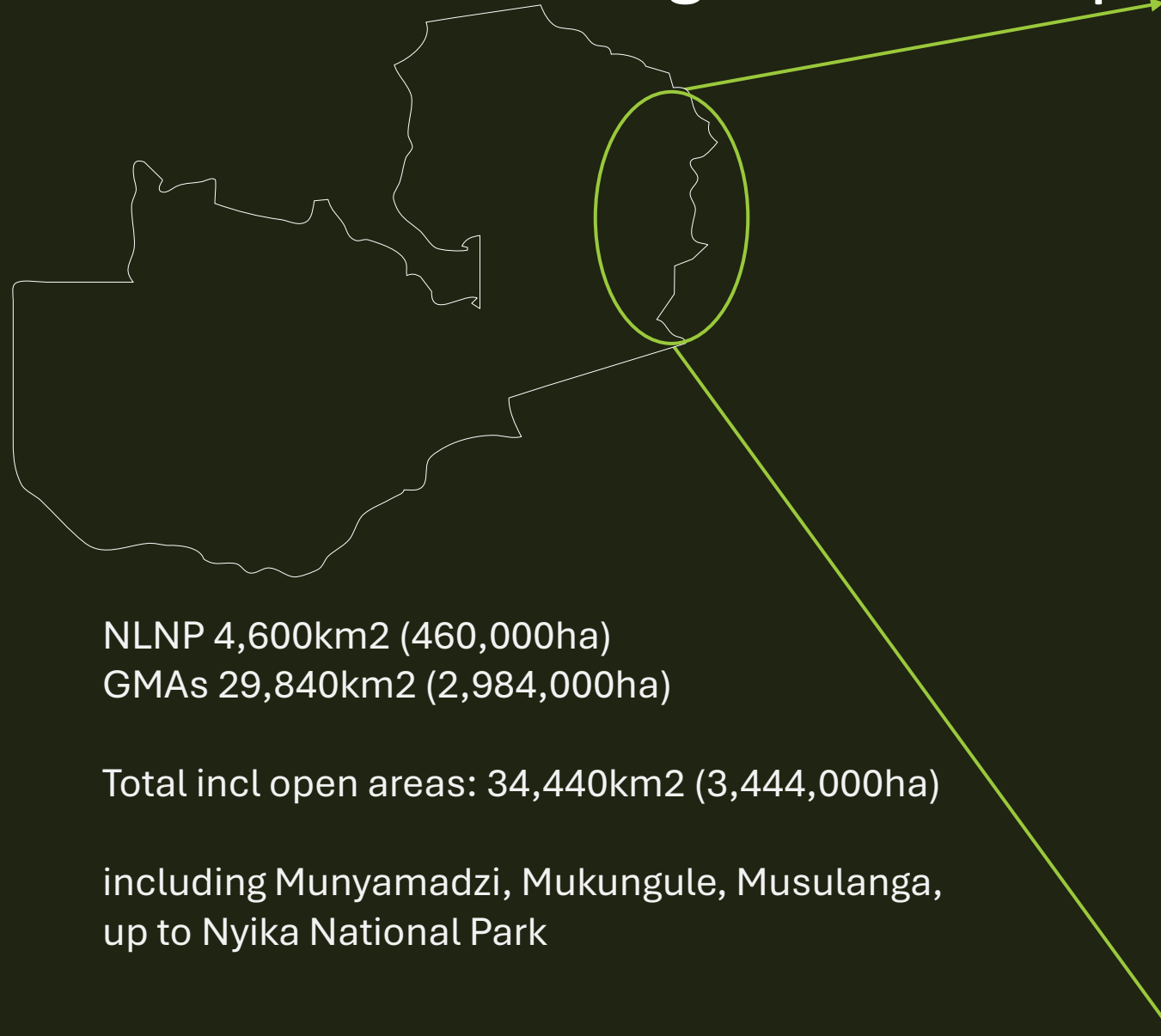
**Motto:** “One Zambia, One Nation”

# About Zambia Cont.



- Plateau country with rivers, wetlands, and savannah
- Major rivers: Zambezi, Kafue, **Luangwa**
- Economic sector: Mining, Agriculture, energy (hydropower), **Tourism**
- 20 National Parks, 36 Game Management Areas
- Strong role of chiefs and traditional leadership alongside modern governance

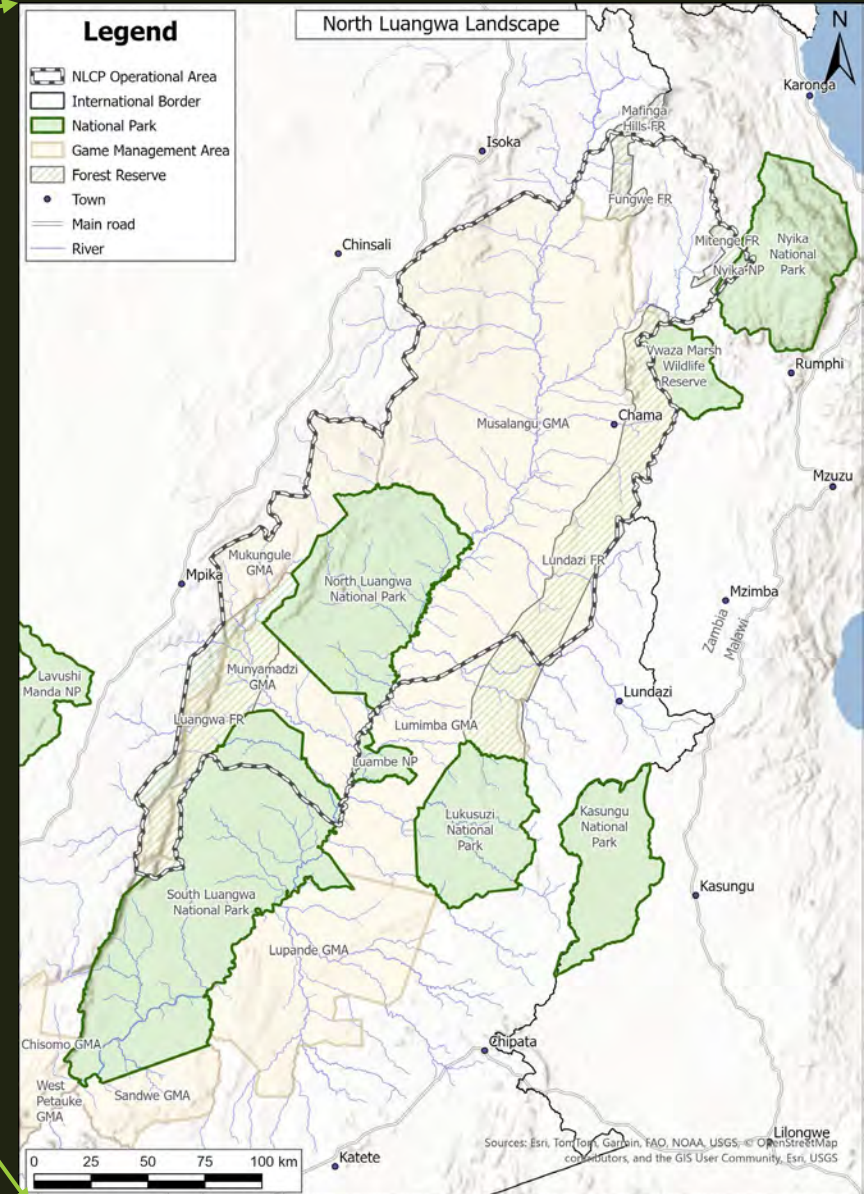
# About the North Luangwa Landscape



NLNP 4,600km<sup>2</sup> (460,000ha)  
GMAs 29,840km<sup>2</sup> (2,984,000ha)

Total incl open areas: 34,440km<sup>2</sup> (3,444,000ha)

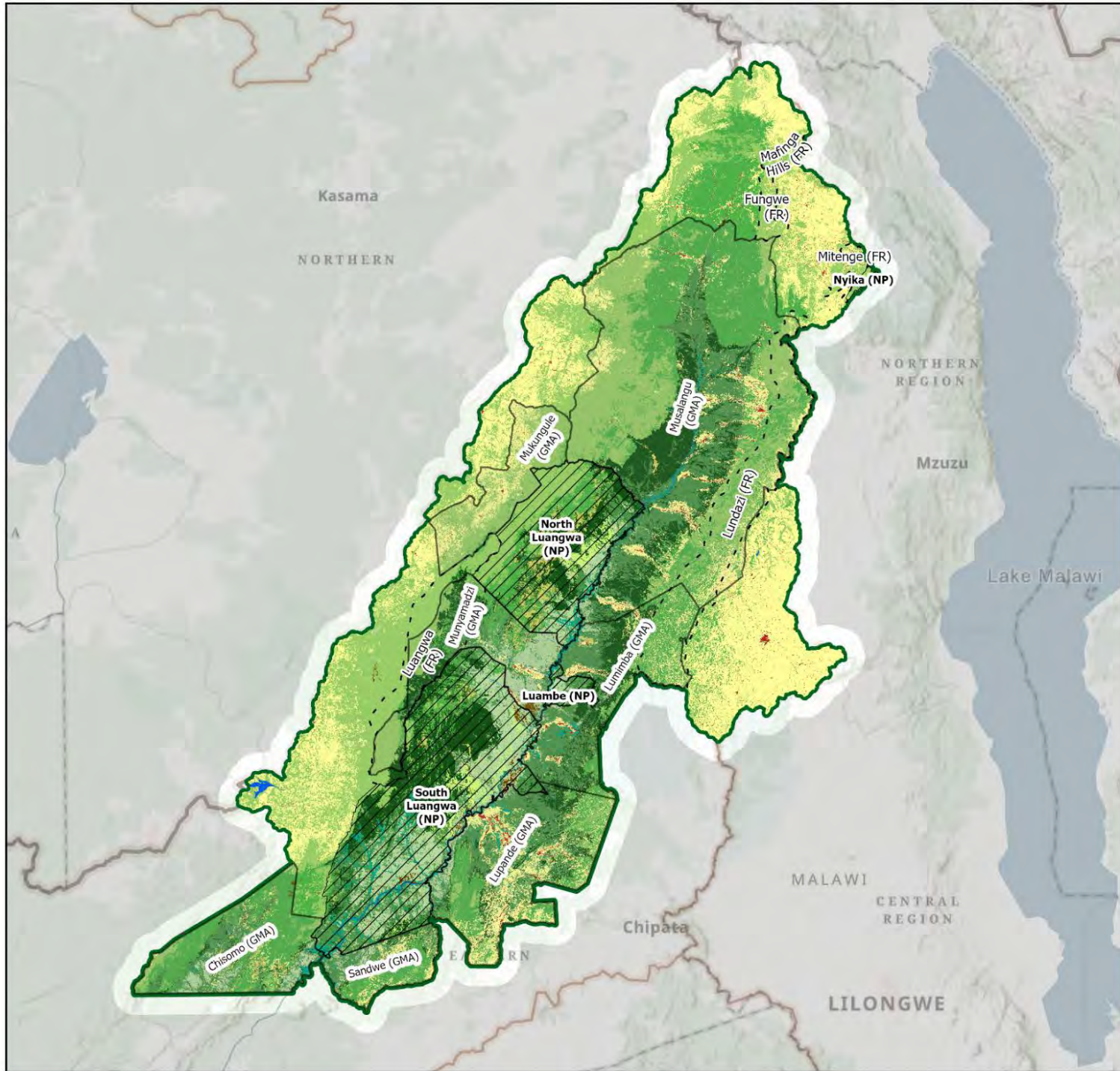
including Munyamadzi, Mukungule, Musulanga,  
up to Nyika National Park





# NORTH LUANGWA LANDSCAPE BIODIVERSITY

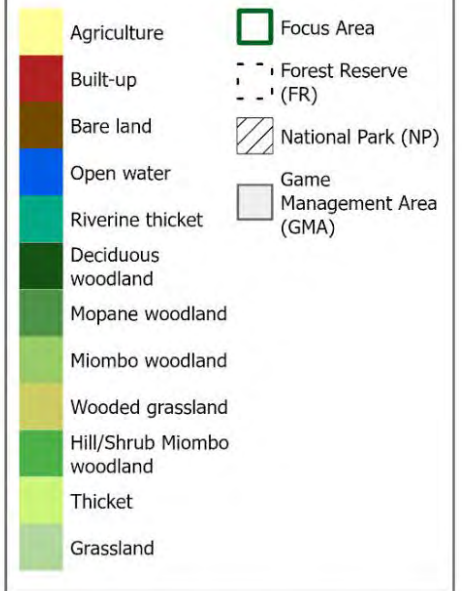




FRANKFURT  
ZOOLOGICAL  
SOCIETY



# NORTH LUANGWA Landscape Land-use change

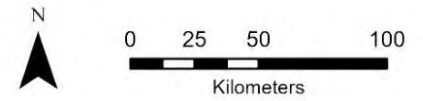


Projection System:  
Universal Transverse Mercator (UTM) Zone 36S

Geographic Coordinate System:  
WGS 1984

Scale 1:2 700 000

Service Credits:  
Sources: Esri, Vantor, Airbus DS, USGS, NGA, NASA, CGIAR, N Robinson, NCEAS, NLS, OS, NMA, Geodatasystyrelsen, Rijkswaterstaat, GSA, Geoland, FEMA, Intermap, and the GIS user community, Sources: Esri, TomTom, Garmin, FAO, NOAA, USGS, © OpenStreetMap contributors, and the GIS User Community, Sources: Esri, © World Wildlife Fund, Inc.



# NLCP Milestones

1986

Project founded to address intensive poaching

2014

CBNRM investment scaled up to increase community involvement and buy-in

2021

Linking livelihoods and landscape strategy developed

2025

5-year Strategic Plan development

First black rhino reintroduced

2003

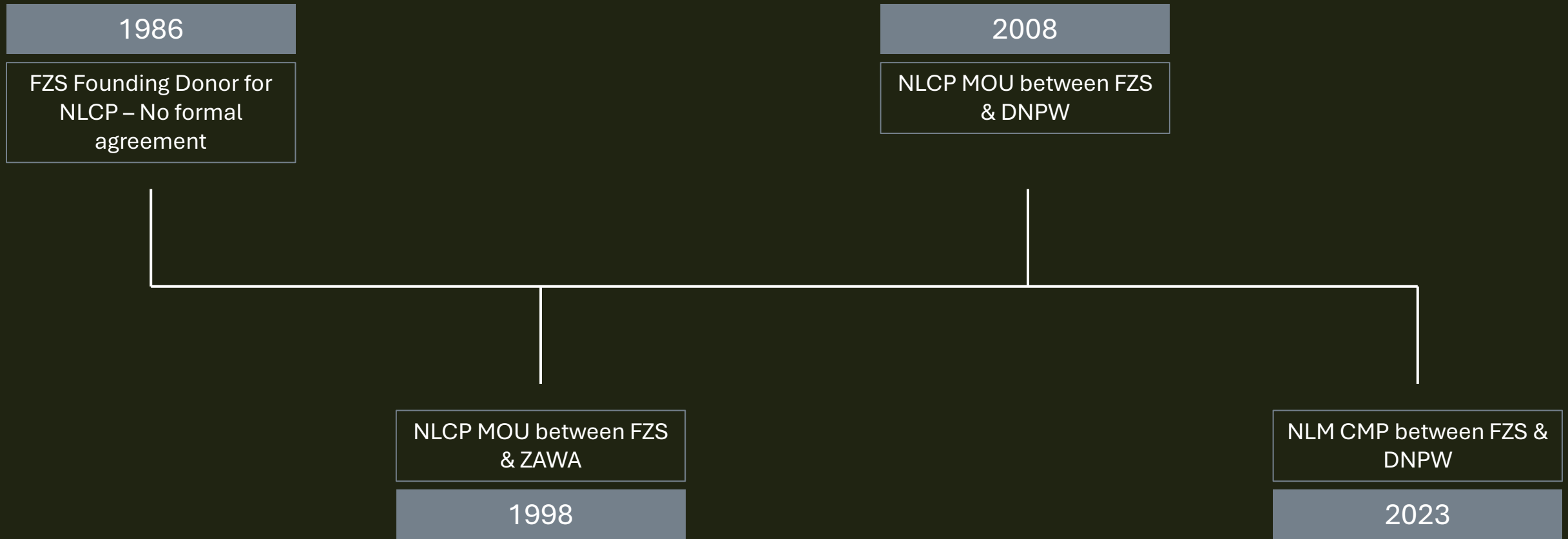
First year ZERO poached elephant in NLP

2018

Legacy Landscape selection; IUCN Greenlisting

2022

# Management Agreement History



# NORTH LUANGWA MANAGEMENT COMPANY

Established 2024



## Conservation Partnership

The CP agreement is designed to bring DNPW and FZS together under one special purpose vehicle for the management of North Luangwa National Park and the surrounding landscape.



## 20-year period

Established on an already long-standing relationship dating back to 1986, the agreement solidifies the partnership for a further 20 years allowing for long-term planning and conservation management.



## Equal oversight

The board of North Luangwa Management comprises equal representation from DNPW and FZS with an Executive Management Team headed by the Park Manager and Area Warden reporting to them.



## Aligned policies and procedures

A combined HR manual guides the team assigned to and employed by North Luangwa Management.



# LINKING LIVELIHOODS AND LANDSCAPE

40 Years of Implementation:  
Relationships, Trust, Multi-year  
Momentum

Socio-ecological systems:  
human and environmental well-  
being are intertwined

3 GMAs

10 Chiefdoms

Conservation = employment = Trust  
= Linking Livelihoods & Landscape



# Our Approach – Addressing Challenges

## Linking Livelihoods and Landscape

### Governance



- Community Resources Board governance
- Complex institutional arrangements
- Monopolistic land use
- Poor compliance to Land Use
- Weak Natural Resource Management implementation
- Uncoordinated collaborating institutions
- Conflicting and restrictive legislation

### Biodiversity



- Insufficient harnessing of wildlife and natural resource economy opportunity
- Land transformation
- Illegal farm blocks
- Mining
- Illegal timber logging
- Indiscriminate fires

### Socio-economic



- HWC
- Low employment levels
- Inadequate revenue generation
- Food and nutrition insecurity
- Poor access to health facilities
- Poor access to markets
- Social norms affecting gender and inclusivity
- Low education levels with girls
- Misconceptions about conservation education

# LINKING LIVELIHOODS AND LANDSCAPE

Demonstrating value in human and nature coexistence



## GOVERNANCE

Administration, Operations

Workshop

Infrastructure development

Communication systems and  
technology



## INFRASTRUCTURE DEVELOPMENT

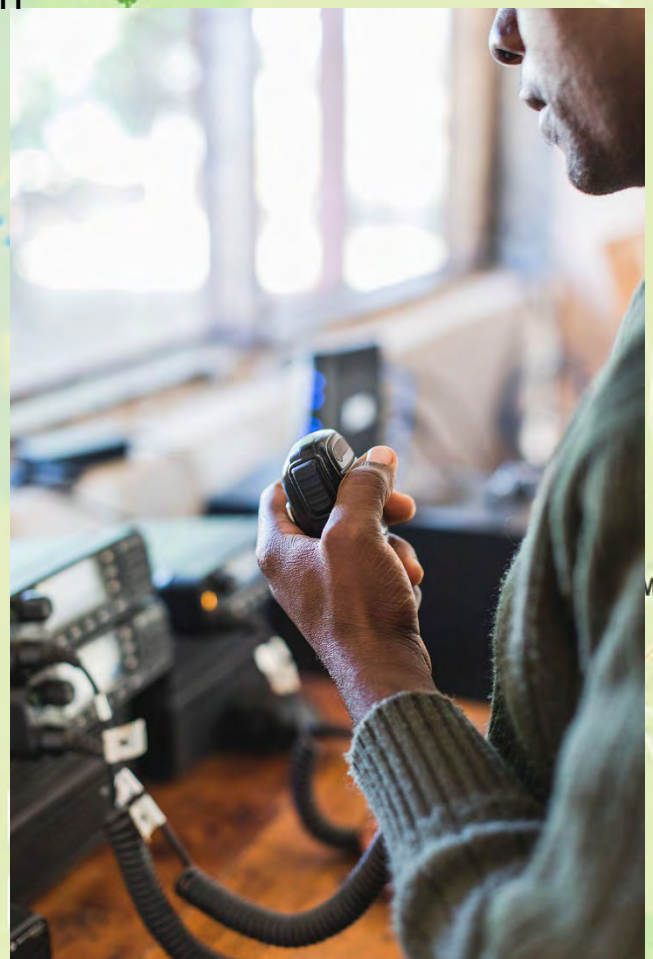
- > 235 scout houses and 70 bridges and river crossings
- 1300km of roads built and annually maintained

## MANO HEADQUARTERS:

- Shared project office (FZS & DNPW Staff)
- Housing for Rangers and key CMP personnel
- Workshop and storage facilities
- New K9 Unit Kennels
- New Control room and airplane hangar
- Lower footprint within the protected area



Communication systems and technology



© Mapbox © OpenStreetMap Improve this map



# LINKING LIVELIHOODS AND LANDSCAPE



BIODIVERSITY  
Resources Protection  
Ecological monitoring

# Protection Structure

## Landscape Integration Unit

- Linking Livelihoods and Landscape

## NLCP K9

- Provides support to IIU and REOU for successful detection and conviction of IWT and illegal activities

## Intelligence and Investigations Unit

- Provides intelligence from GMA and broader landscape that informs intelligence lead LE ops.

## Sector Units

- Patrols surrounding GMAs

## Rhino and Elephant Protection Unit

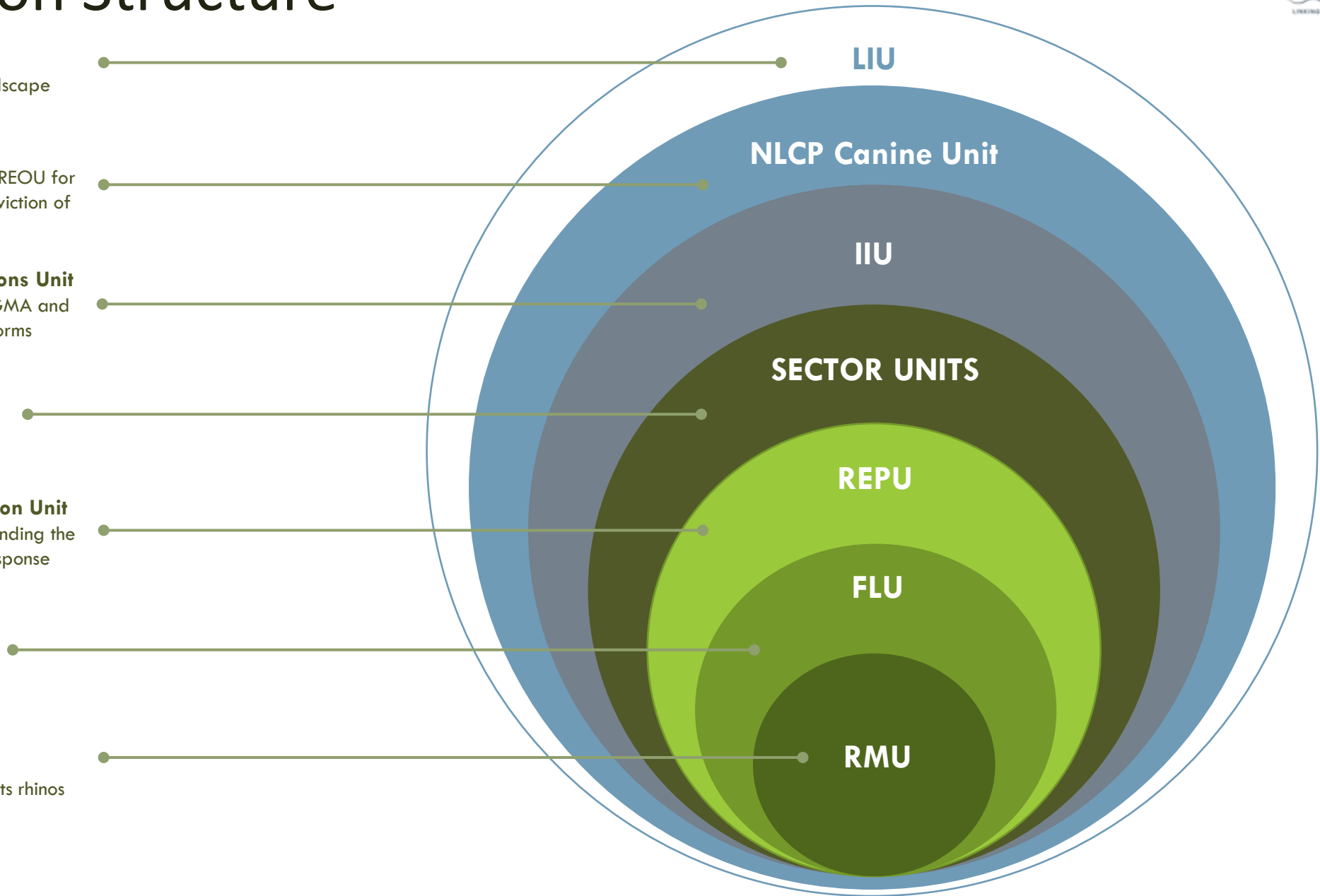
- Patrols National Park surrounding the IPZ; provides emergency response support to RMU

## Fence Line Unit

- Protects perimeter of IPZ

## Rhino Monitoring Unit

- Directly monitors and protects rhinos within the IPZ.





## ESTABLISH BASELINES

Establish baselines and indicators for measuring change in ecological integrity



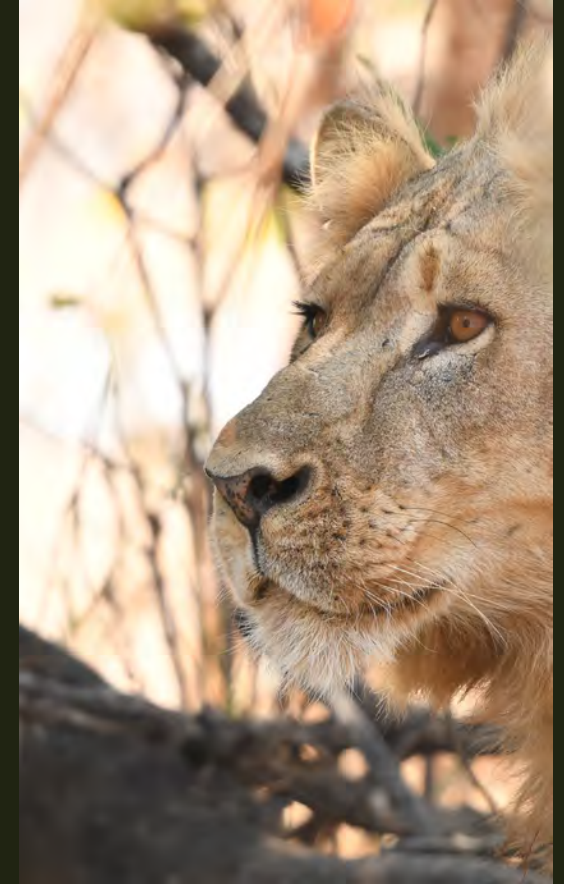
## MONITOR TRENDS

Assess the status and trends of key species and their habitats



## INFORM ADAPTIVE MANAGEMENT

Inform adaptive management and decision making for conservation and livelihood resilience



## EVALUATE IMPACT

Evaluate the outcomes and impacts of conservation actions



## Hunting monitoring

Safari hunting monitored since 2021 using SMART

[Safari Hunting Dashboard](#)

Resident and bona fide hunting monitoring initiated in 2025

[Resident Hunting Dashboard](#)

## Safari hunting

- Overcame initial opposition to the monitoring app from concession holders
- Reliable data with SMART and training of data managers

## Resident and bona fide hunting

- 48 officers from five hunting blocks trained in 2025
- Highlighted challenge of overcoming historical norms in the sector

# Camera-based aerial survey

- Last Rear Seat Observer (RSO\_ survey conducted in 2020 – knowledge gap on status and distribution of elephant
- New camera-based techniques offer a more cost-effective, accurate, and auditable solution
- October 2025 conducted a view angle study with WildEye Conservation
- Employed a dual-camera rig – one nadir and one rear facing oblique – to compare detection probability of elephant at different angles
- Aiming to conduct a survey of the landscape in September 2026 pending funding and permissions



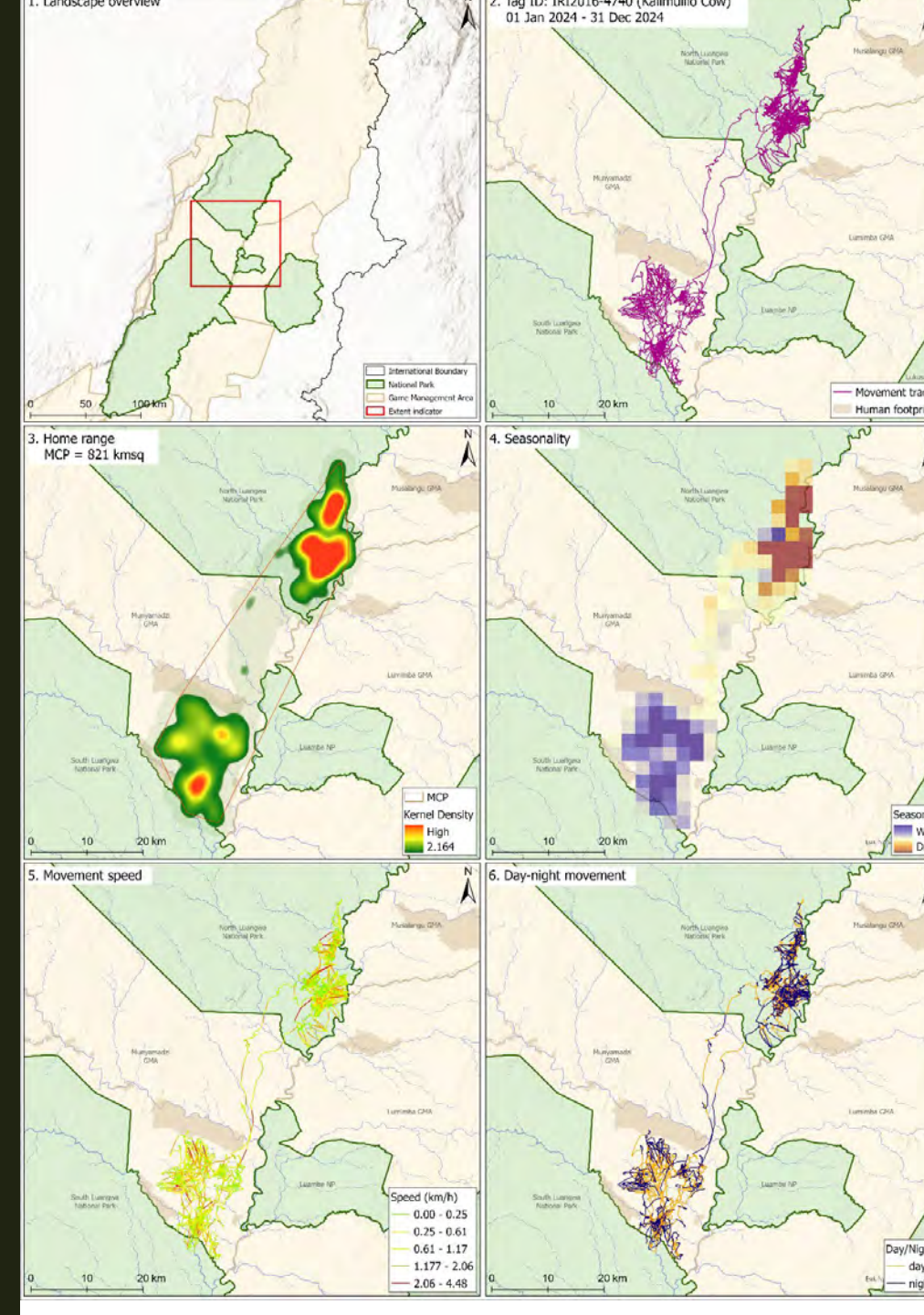


# Elephant movement

24 elephants collared between 2022 and 2023

Improve understanding of the patterns and drivers of elephant movement

Assess the efficacy and impact of HWCox measures on elephant movement



# LINKING LIVELIHOODS AND LANDSCAPE

## NORTH LUANGWA THE AMATOLOLO EXPERIENCE

### Tented camps

- Three tented camps – Samala (Mukungule), Ituba (Chifunda), Mandalena (Nabwalya)
- 2025 revenue: USD 24,320

### Amatololo Loop

- Four campsites in NLNP connecting Ituba and Samala camps for self-drive tourists
- 2025 revenue: USD 20,500



SOCIO-ECONOMIC  
Tourism development  
Landscape Integration Unit



# LANDSCAPE INTEGRATION UNIT



1. HWCox



2. Institutional  
Governance



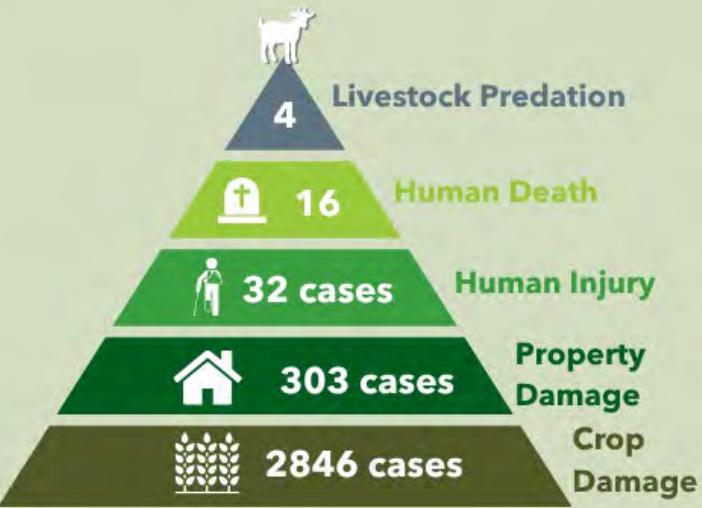
3. Conservation  
Education



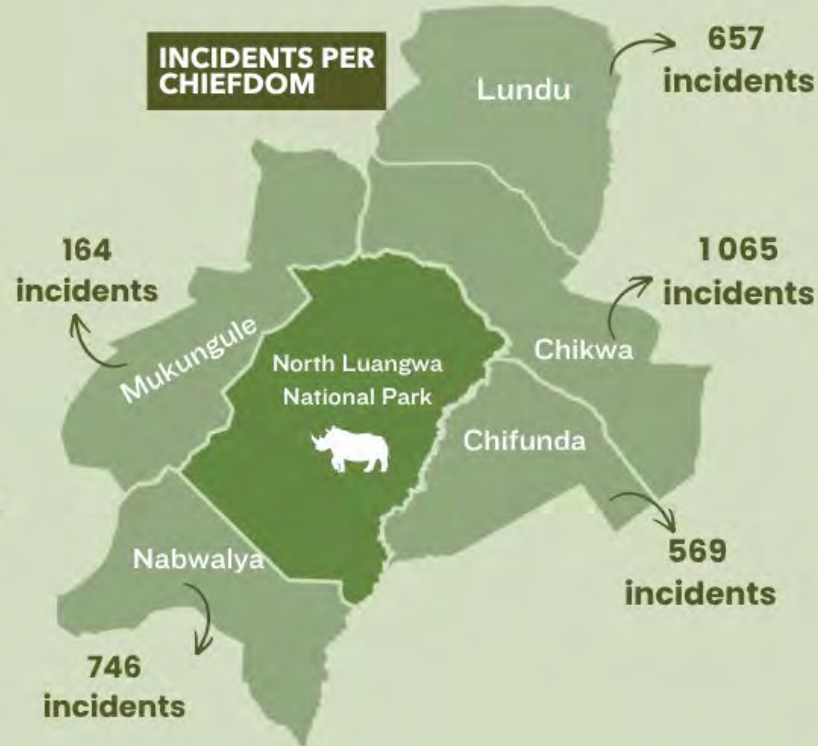
4. Livelihoods

# HUMAN WILDLIFE CO-EXISTENCE

## HUMAN WILDLIFE CO-EXISTENCE 2025



## NORTH LUANGWA LANDSCAPE



# HWC INTERVENTIONS



## 1. Prevention and Mitigation

- Elephant hotspot with extensive collar data
- Polywire fencing (solar, SER)
- Community based guarding
- Enumerators
- Education and sensitisation
- Land-use planning
- Firecrackers



# Strengthening governance and partnership arrangements

- Governance and institutional arrangements
- Multi-tier
- NLM Collaborative Management
- Partnership Park and GMAs – CMP, CRB and Stewardship Agreements



## National

- Ministries
- CBNRM Association

## Transboundary

- TFCA structures

## Landscape

- North Luangwa Landscape Forum
- NLLF Focus groups

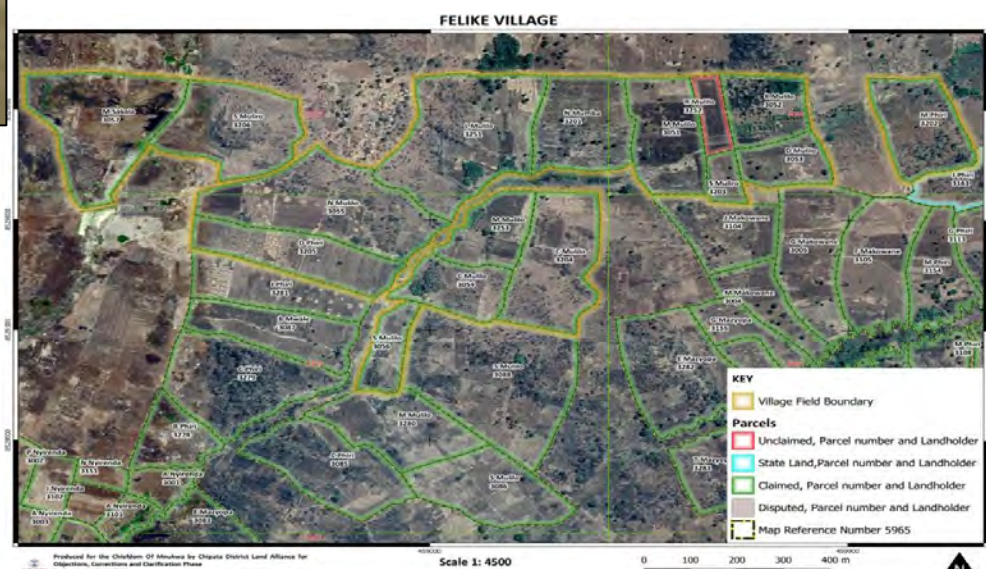
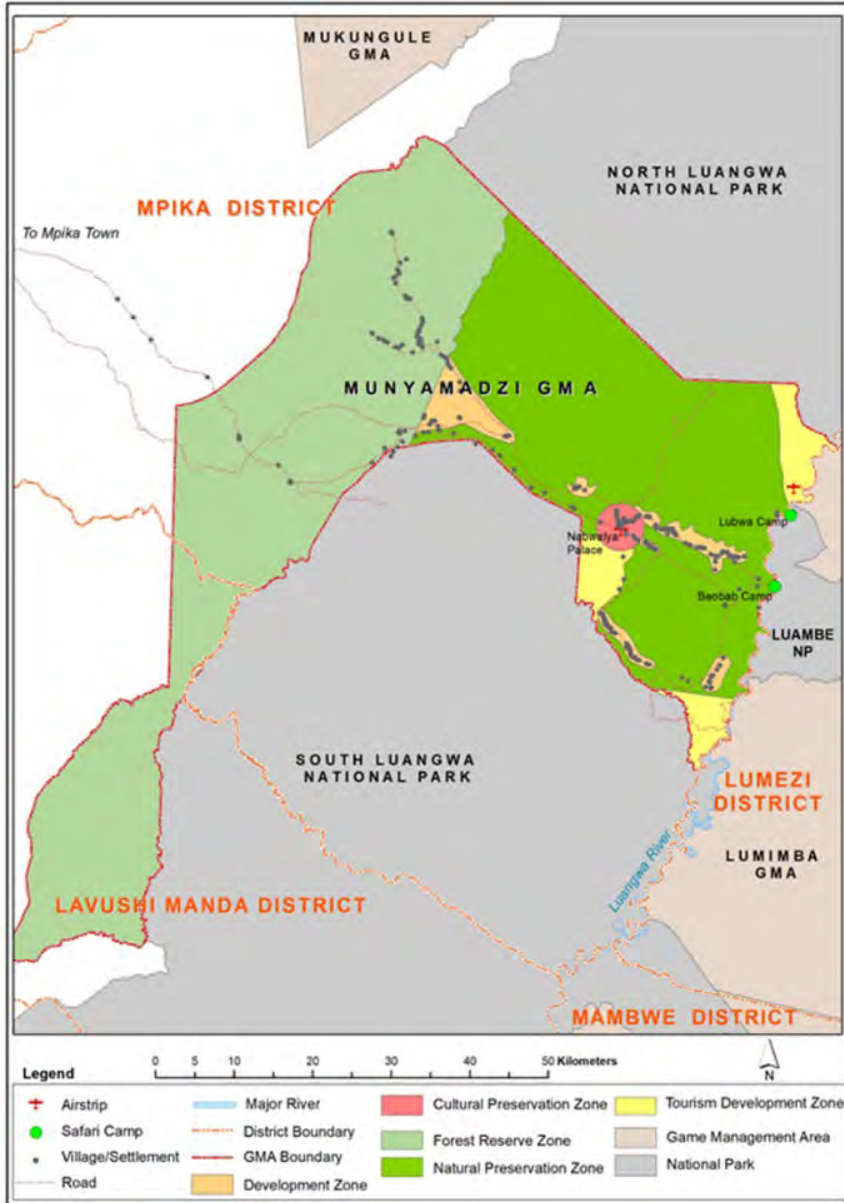
## Provincial and District

- District Mpika
- District Chama
- Government Departments; DNPW, Forestry, Agriculture, Health

## Chiefdom

- CRBs
- VAGs
- CFMGs
- Community Conservation Forum
- NGO/CBO structures
- Cooperatives

# Land- Use Planning



# CONSERVATION EDUCATION

**Lolesha Luangwa (2003)**  
**‘Looking after Luangwa’**

**Components:**

- ConsEd clubs
- Mini Change Groups (MCGs)
- Nature Nights
- Campaigns & community sensitization

**Beneficiaries:**

- 4 Chiefdoms (Increasing to 7 in 2026)
- 31 ConsEd schools (986 members)
- 16 MCGs (339 members)



## Lolesha Luangwa Methodology

- Education for Environmental Citizenship
- Place-based learning
- Enquiry-based learning

*Awarded 2013 by British & Irish  
Association of Zoos & Aquariums  
(BIAZA) ‘Best Education Project:  
schools and educational institutions’*



# LIVELIHOODS

## CoCoBa & Enterprise

- CoCoBas 107 active groups across 5 Chiefdoms
- Membership Women 2297 and 612 men (Total 2909)
- Strong understanding of conservation
- Synopsis from internal impact Assessment over 70% of CoCoBa members are into diversified businesses. More resilient compared to non CoCoBa Members.





## Vocational training, small grants and loans

- 196 enterprises across 5 Chiefdoms (Males 130, Females 66)
- Predominant businesses:  
Grocery shops, farming and gardening
- Strong understanding of conservation
- Vocational Skills:  
96 beneficiaries (Male 56, Female 40)



# Community Enterprises



- **ZERO**  
rhinos poached in NLNP  
2003 – 2025
- **ZERO**  
elephants poached in  
NLNP since 2024
- **Highest density and  
fastest growing elephant  
population in Zambia**
- **70 % of Luangwa Valley  
elephants**
- **Poachers and threats  
coming from OUTSIDE  
the NL GMAs**

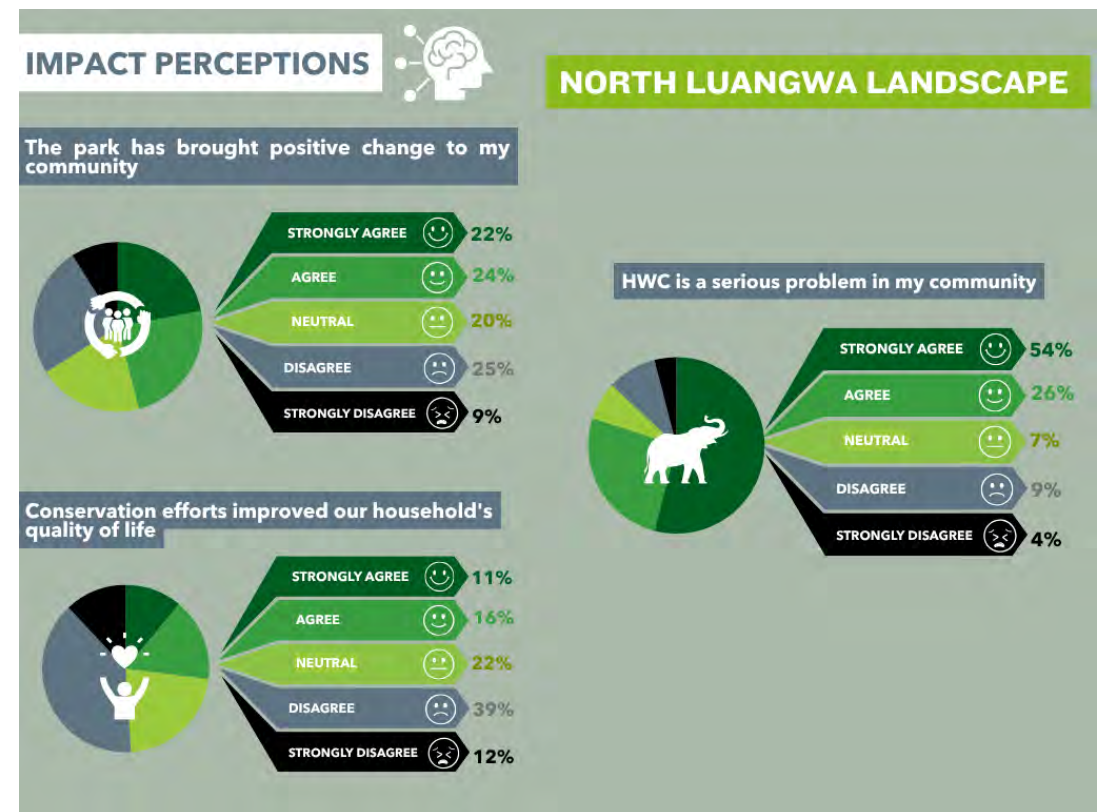
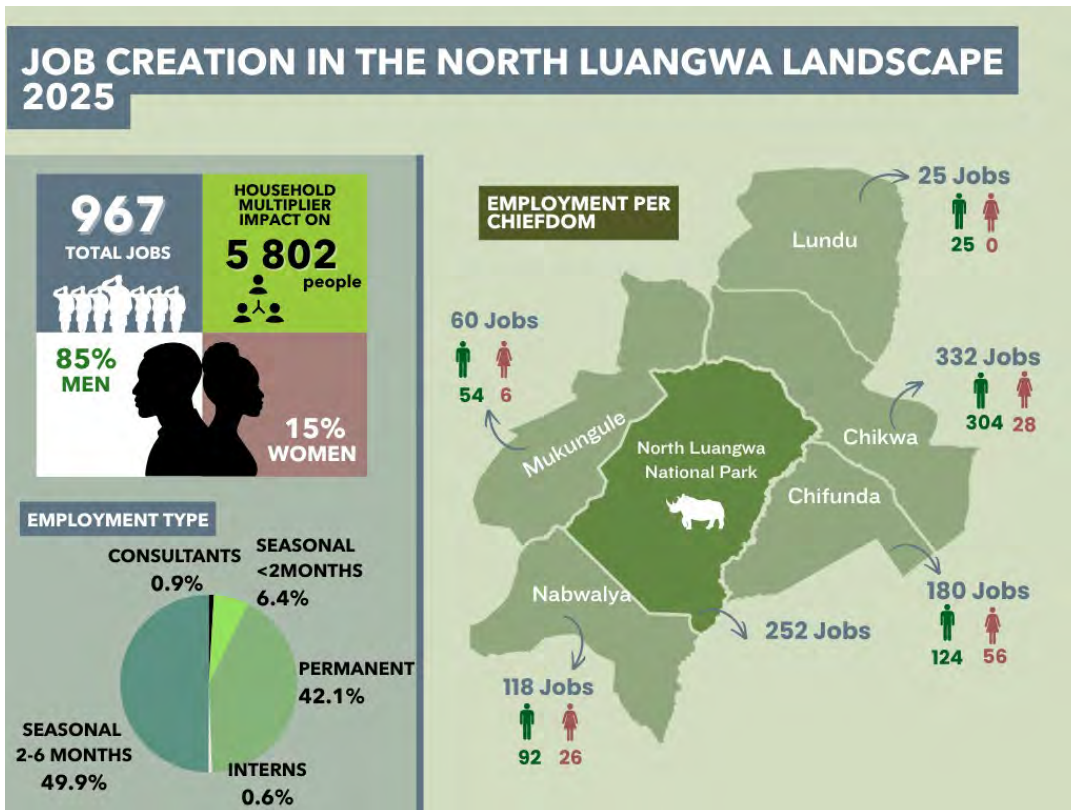


# K9 Unit

2016-2025 Highest arrest rate of all K9 units in Africa with over 1000  
\$150-\$200 per arrest versus foot patrols that are over \$1000 per arrest  
80% Female handlers



# Socio-Economic Impact





## Skilled professionals serving in local communities

- 47 community members trained in tailoring skills
- 16 Community members trained in leather processing
- One student selected to pursue teaching
- 15 community members shortlisted to attend vocational skills training – prioritizing recent school graduates without career or further education opportunities



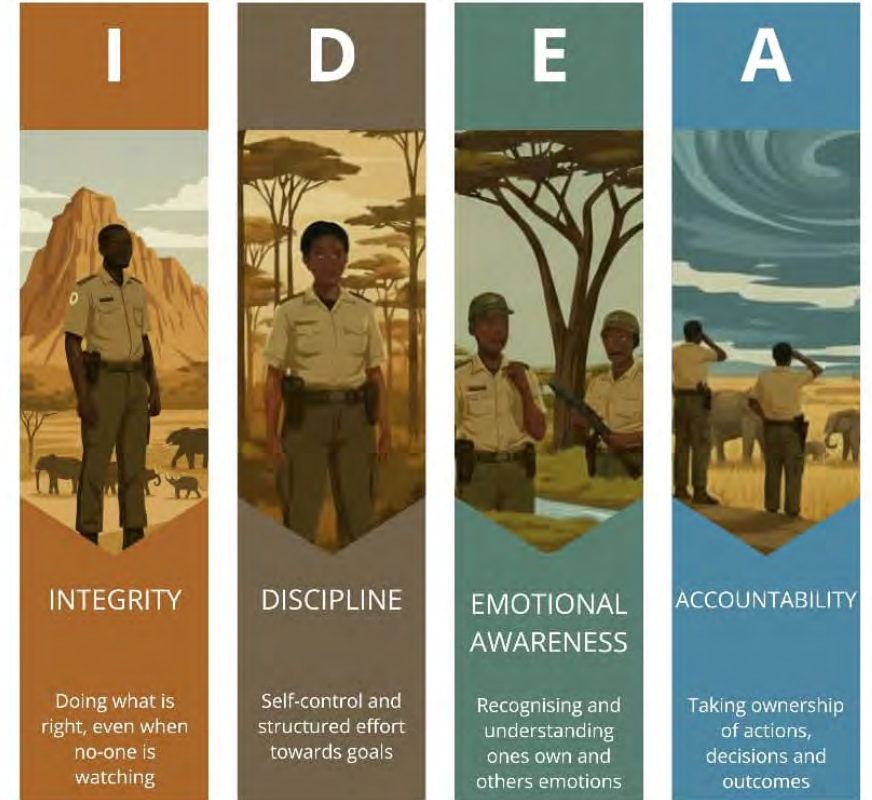
Charity Mukalipi, Safe Motherhood Action Group (SMAG) member trained in tailoring



# INTEGRITY MANAGEMENT

- Our greatest risk could be internal
- Building resilience to misconduct and corruption
- Need to understand societal pressures and social norms that shape behaviour
- Measure: Financial household literacy training to all staff and spouses

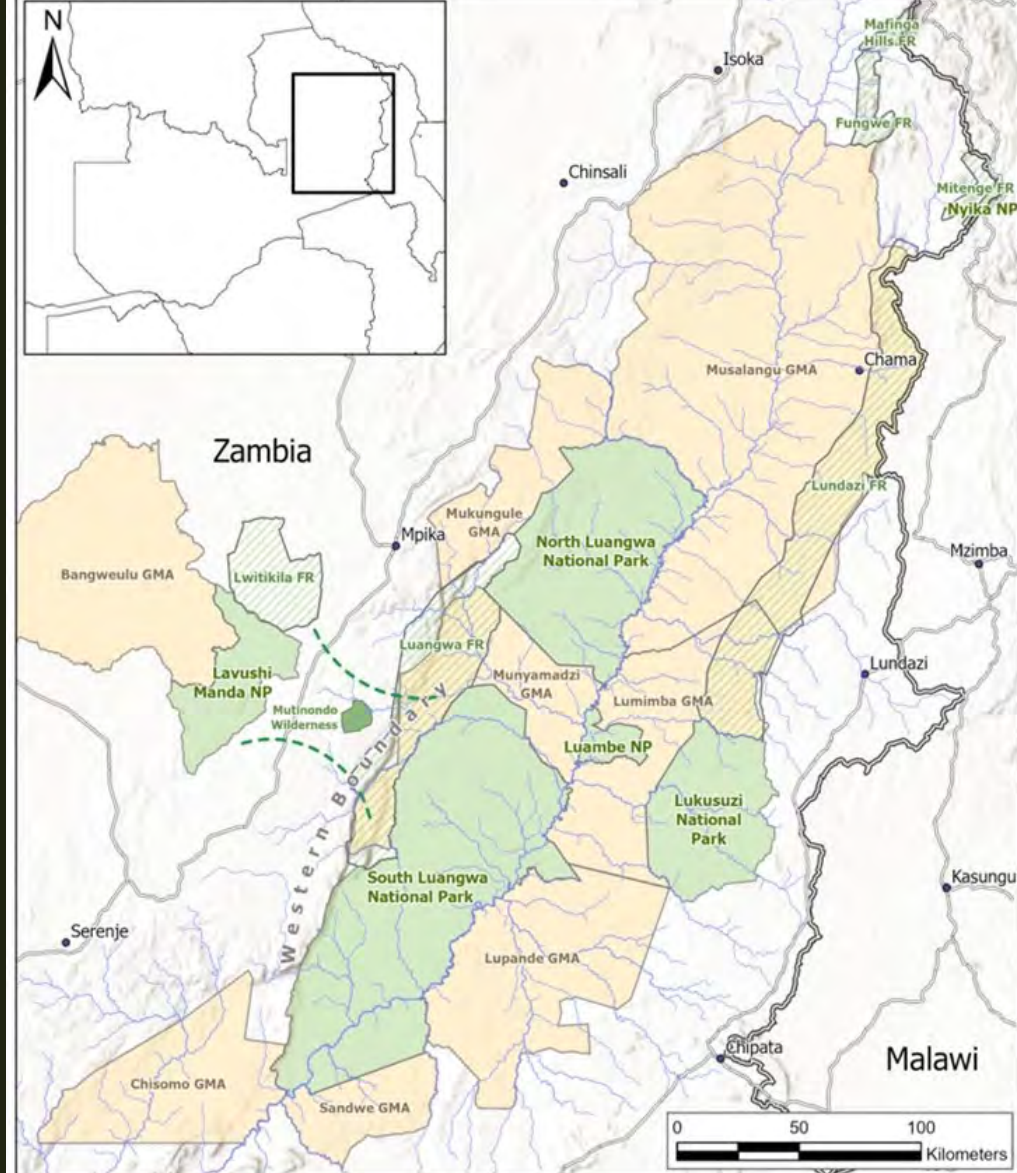
## IDEA: NLCP'S FOUR ATTRIBUTE PILLARS





## IMPLEMENT!

- Northern Extension
- Southern Extension
- Annual socio-economic impact assessment
- Conservation Partnerships Association (CPA) set up to drive policy development and united voice to GRZ

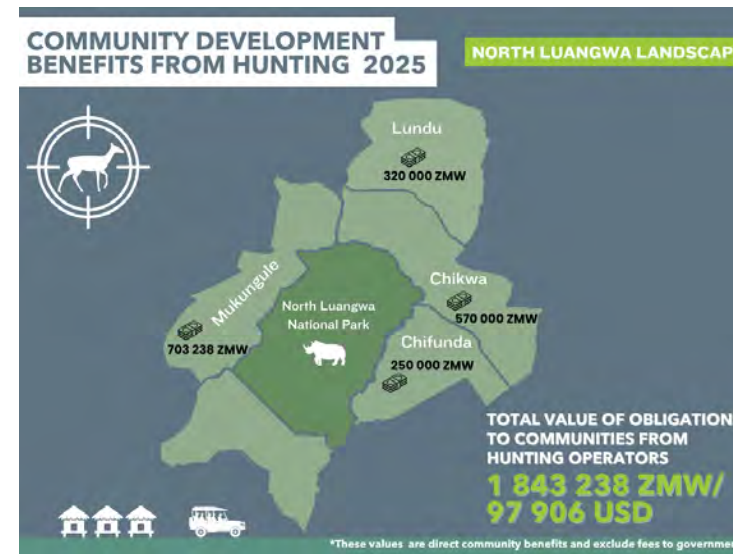
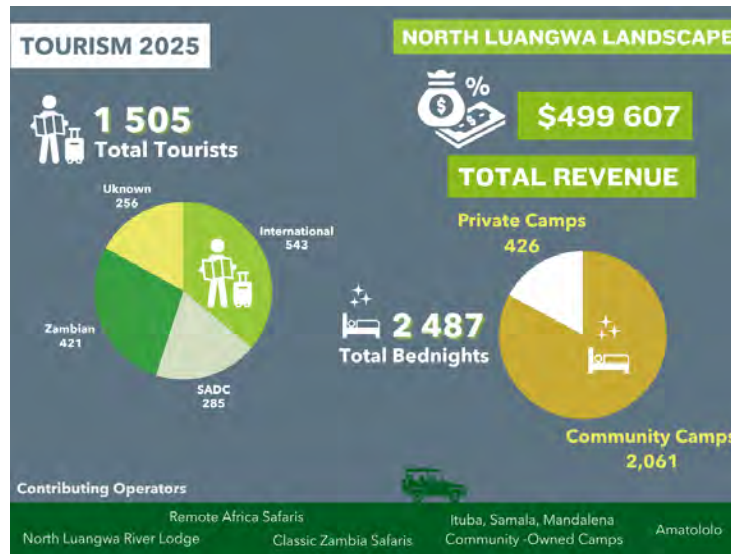


### Legend

- |                        |                   |
|------------------------|-------------------|
| International Boundary | Wildlife Corridor |
| National Park          | Town              |
| Game Management Area   | Main Road         |
| Forest Reserve         | River             |
| Private Conservancy    |                   |

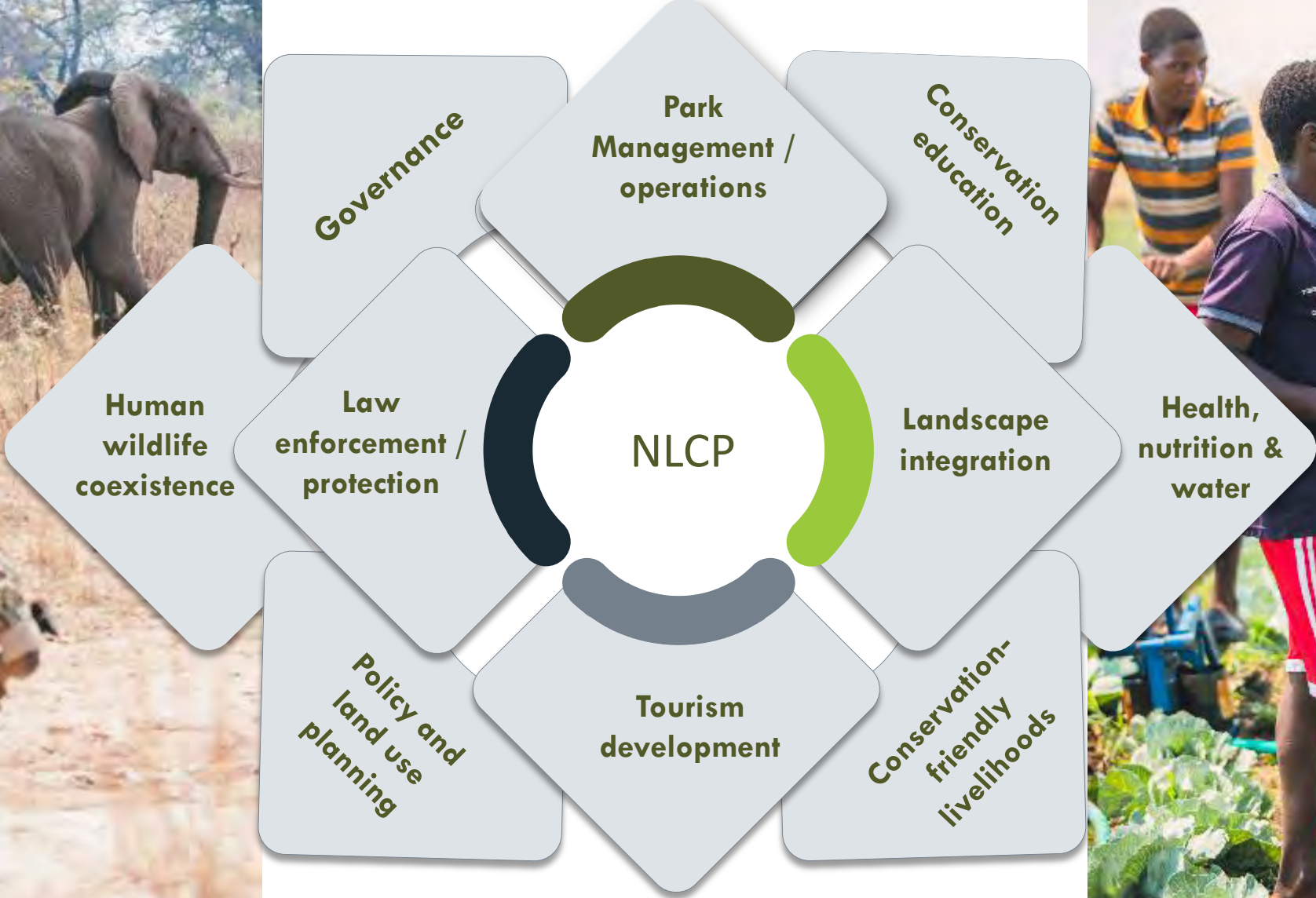


# Optimise Investments in Conservation



- **Park and Chieftdom level business plans**
- **Landscape financing solutions** – bonds, credits (carbon etc), Debt for Nature Swaps, etc

# LINKING LIVELIHOODS & LANDSCAPE



In Partnership Anything is Possible



South Luangwa Rhino Rescue 2021

© Edward Selfe / NLCP

Thank you for your attention

